

## STANDARD / OPTIONAL

HYDRAULIC SYSTEM	STD	OPT
1 way breaker piping	•	
2 way auxiliary hydraulics		•
Bio oil		•
Dual power ready		•
Hydraulic power unit		•
WORK & SAFETY	STD	OPT
Hydraulic retractable undercarriage	•	
180 mm Rubber track	•	
ROPS Foldable safety bar	•	
Bucket (250 mm)		•
Bucket (300 mm)		•
Bucket (400 mm)		•
Bucket (700 mm)		•
Foldable dozer blade	•	
Work light	•	

**Gross Power**  
13.3 HP(9.9 kW) at 2,100 rpm

**Net Power**  
13 HP(9.6 kW) at 2,100 rpm

**Bucket Capacity**  
0.014 ~ 0.033 m<sup>3</sup>

**Operating Weight**  
1,032 ~ 1,087 kg (2,275 ~ 2,396 lbs)

COMPACT EXCAVATOR

# HX10A

With EU Stage V Engine installed



## HYUNDAI CONSTRUCTION EQUIPMENT

Head Office (Sales Office)

3F, BUNDANG FIRST TOWER, 55 BUNDANG-RO, BUNDANG-GU, SEONGNAM-SI, GYEONGGI-DO, 13591, KOREA

PLEASE CONTACT



## THE SMALLEST BUT MOST STRONGEST

HX10A, the smallest model of Hyundai, can work through any door and any building with retractable dozer and track, foldable safety bar. Size of the machine is ideal for demolition and remodeling inside buildings, with standard breaker piping. Also HX10A can pass any door with the retractable undercarriage and foldable ROPS bar. Contact your dealer to find out how the HX10A can help you work more efficiently, productively and safely !



### HYDRAULIC POWER UNIT

THE POWERFUL 3 CPYLINDER ENGINE  
GUARANTEES AMPLE POWER FOR  
A WIDE RANGE OF ACTIVITIES

HX10A is operated with optimum fuel efficiency and minimal emissions to ensure compliance with environmental regulations. This little workhorse has been designed to ensure extreme versatility and to work with maximum efficiency every day and in almost all environments.



### EASY MAINTENANCE AND SERVICES

WIDE OPEN ENGINE COVER PROVIDS  
EASY ACCESS FOR SERVING TASKS

Operators can open engine cover easily and check equipment more conveniently.



### DURABLE DESIGN OF BOOM & ARM

The top mounted boom cylinder as well as the hoses routed inside the boom provide extra to avoid damage. Breaker piping is standard, ideal machine to use hammer inside à building.





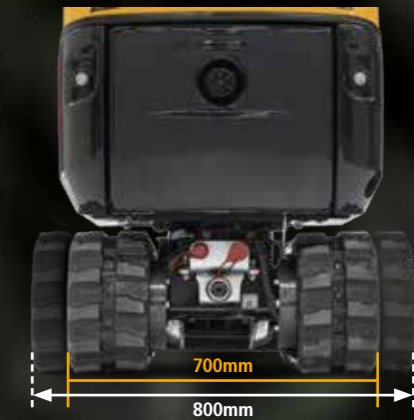
## READY TO CHANGE THE WORLD WITH HYUNDAI MINI EXCAVATORS

You are about to enter a world where anything is possible and tiny efforts move mountains. With practical features like a two-column foldable ROPS bar and swing post-mounted mono-boom, the new HX10A micro excavator is easy to transport and compact enough to work efficiently on all your construction sites. Its slim design fits in the tightest of spaces and passes easily through doorways and passages, indoors and outdoors. Add the optional electro-hydraulic unit and it can even be operated electrically and emission-free. It's time to experience the Hyundai Effect!

### ADJUSTABLE UNDERCARRIAGE

ADJUST UNDERCARRIAGE WIDTH EASILY FOR VARIOUS WORK ENVIRONMENTS WITH NEW HX10A MICRO EXCAVATOR

The variable frame guarantees easy passage through doors, corridors and alleys.



### 2 COLUMN FOLDABLE ROPS BAR

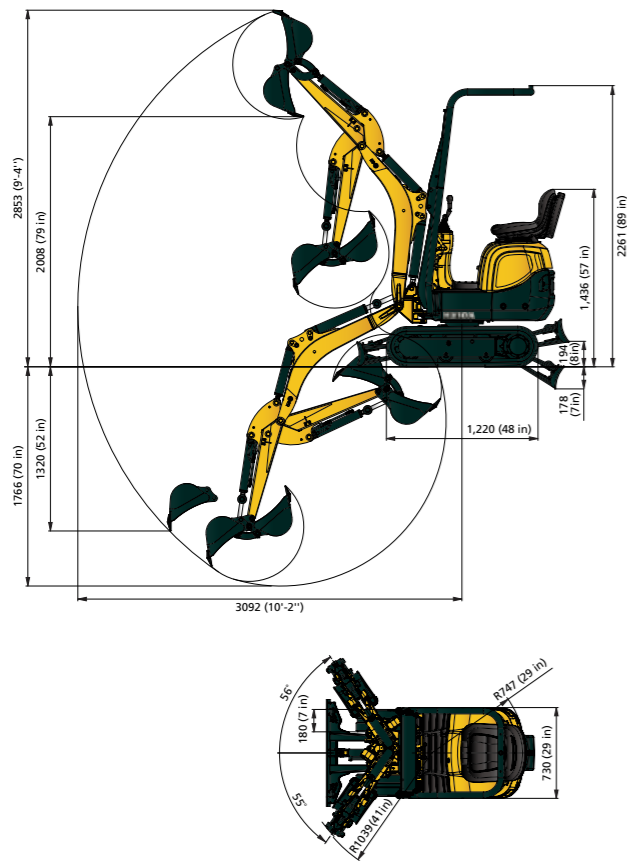
HX10A MOVES TO ANY NARROW SPACES MORE RESTRICTED AND WORKS EFFICIENTLY

It is easy to transport between various sites and can be moved through practically every passage or door. It is an ideal device for demolition work in indoor environments.



# DIMENSION & LIFTING CAPACITY

## HX10A DIMENSIONS



<b>Height</b>	2,261 mm (89 in)
<b>Upper carriage width</b>	730 mm (29 in)
<b>Width with retracted / Extended telescopic travel gear</b>	700 / 860 mm (28 / 34 in)
<b>Width with stabilizer blade folded in/out</b>	700 / 860 mm (28 / 34 in)
<b>Transport length</b>	2,747 (9')
<b>Max. digging depth</b>	1,766 mm (70 in)
<b>Stick length</b>	890 mm (35 in)
<b>Max. vertical digging depth</b>	1,320 mm (52 in)
<b>Max. digging height</b>	2,853 mm (9' - 4')
<b>Max. tilt-out height</b>	2,008 mm (79 in)
<b>Max. digging radius</b>	3,092 mm (10' - 2')
<b>Max. reach at ground level</b>	3,046 mm (10')
<b>Max. breakout force at bucket tooth</b>	8.9 kN (2,001 lbf)
<b>Max. tearout force</b>	4.5 kN (1,012 lbf)
<b>Min. tail end slewing radius</b>	747 mm (29 in)
<b>Max. tail end lateral projection of upper carriage, 90° rotation With retracted / Extended telescopic travel gear With stabilizer blade folded in/out</b>	397 / 317 mm (16 / 12 in) 397 / 317 mm (16 / 12 in)
<b>Max. boom displacement to bucket center (right side)</b>	287 mm (11 in)
<b>Max. boom displacement to bucket center (left side)</b>	242 mm (10 in)

Rating over-front with dozer raised Rating over-side or 360 degree

## HX10A LIFTING CAPACITY

Longitudinal direction, stabilizer blade at front and raised

Load point height m (in)	Load radius								At max. reach		
	2.5 m (98 in)		2.0 m (79 in)		1.5 m (59 in)		1.0 m (39 in)		Capacity	Reach	
2.4 m (94 in)	kg								216	216	1.41
	lb								477	477	(4.61)
2.0 m (79 in)	kg		203	170					205	167	2.03
	lb		448	376					453	367	(6.64)
1.5 m (59 in)	kg		189	172					163	126	2.40
	lb		416	378					358	277	(7.86)
1.0 m (39 in)	kg	151	166	212	166	247	247		142	109	2.59
	lb	332	255	469	366	544	544		314	240	(8.49)
0.5 m (20 in)	kg	147	113	204	158	311	241		135	103	2.65
	lb	325	248	450	347	685	531		298	227	(8.7)
Ground Line	kg	145	110	197	150	296	226	570	137	104	2.60
	lb	319	242	434	332	653	499	1,257	303	230	(8.52)
-0.5 m (-20 in)	kg			194	148	292	222	561	146	115	2.41
	lb			428	325	644	490	1,236	323	253	(7.91)
-1.0 m (-39 in)	kg			149	149	243	225	418	138	138	2.05
	lb			328	328	536	497	922	304	304	(6.73)

1 | Lifting capacity are based on ISO 10567. | 2 | Lifting capacity of the HX10A does not exceed 75% of tipping load with the machine on firm, level ground or 87% of full hydraulic capacity. | 3 | The Lift-point is bucket pivot mounting pin on the arm (without bucket). | 4 | (\*) indicates load limited by hydraulic capacity. | 5 | Lifting capacity are based on full fuel tank, operator (75 kg) and extended track.

# SPECIFICATIONS

## ENGINE

Maker / Model	Yanmar 3TNV70 / Stage V
Type	Water-cooled four stroke diesel engine 3-cylinder indirect injection
Gross Power	9.9 kW (13.3 HP) at 2,100 rpm
Net Power (ISO)	9.6 kW (13 HP) at 2,100 rpm
Max. Torque	5.3 kgf · m (38 lbf · ft) at 1,500 rpm
Bore x stroke	70 x 74 mm (2.8" x 2.9")
Piston displacement	854 cc (52.3 cu in)
Battery	12 V 30 Ah
Starting motor	12 V - 1.1 kW
Alternator	12 V - 20 A

## HYDRAULIC SYSTEM

### MAIN PUMP

Type	Twin gear pump 2 x 4 cm <sup>3</sup> (2 x 0.24 in <sup>3</sup> )
Max. flow	2 x 10.7 l/min at 2,675 rpm (2 x 2.8 gpm at 2,675 rpm)
Sub-pump for pilot circuit	n/a

### HYDRAULIC MOTORS

Travel	Slow-running drive motor without gears and with internal leak oil drain
Swing	Slow-running swing motor without gears with automatic break

### RELIEF VALVE SETTING

Travel	170 ± 3 bar (2,466 psi)
Swing circuit	70 bar (1,015 psi)

## OPERATOR'S CABIN

Sound power level (LWA)1	93 dB (A)
Operator-perceived sound pressure level (LPA) 2	77 dB (A)

## COOLANT & LUBRICANT CAPACITY

	liter	US gal	UK gal
Fuel tank	7	1.85	1.54
Engine coolant	2.9	0.77	0.64
Engine oil	2.5	0.66	0.55
Hydraulic tank	13.8	3.65	3.03

## HYDRAULIC CONTROLS

Pilot control	Two joysticks - mechanically operated
Engine throttle	Two travel levers - mechanically operated

## SWING SYSTEM

Swing speed	8 rpm
Tail swing radius	747 mm (29 in)

## DRIVES & BRAKES

Max. travel speed (high) / (low)	1.82 km/h (1.1 mph)
Maximum gradeability	0° / 58 %

## DIGGING FORCE (ISO)

Bucket breakout force	8.9 kN (2,001 lbf)
Arm crowd force	4.5 kN (1,012 lbf)

## OPERATING WEIGHT (WITH ROLLBAR)

Operating weight*	1,087 kg (2,396 lbs)
Transport weight**	990 kg (2,182 lbs)
Track Width	180 mm (7 in)
Ground pressure	0.24 kg/cm <sup>2</sup> (3.4 lbs/in <sup>2</sup> )

\* Service weight: basic machine + full fuel tank + backhoe bucket (250 mm/10 in) + user (75 kg/165 lbs).

\*\* Transport weight : basic machine + 10% fuel capacity.

## UNDERCARRIAGE

Travel gear width (retracted/extended)	700/860 mm (2' - 4" / 2' - 10")
Blade width (folded in/out)	700/860 mm (27.55" / 33.85")
No. of track roller on each side	2

## HYDRAULIC SYSTEM

Operating pressure at connection	Max. 170 bar (2,466 psi)
Flow rate	Max. 20 l/min (5.3 gal/min)

## DIMENSIONS

Height	Dimensions model with rollbar	2,261 mm (89 in)
	Dimensions model without rollbar	1,436 mm (57 in)
Upper carriage width		730 mm (29 in)
Width with retracted / extended telescopic travel gear		700 / 860 mm (28 / 34 in)
Width with stabilizer blade folded in / out		700 / 860 mm (28 / 34 in)
Transport length		2,747 (9')
Max. digging depth		1,766 mm (70 in)
Stick length		890 mm (35 in)
Max. vertical digging depth		1,320 mm (52 in)
Max. digging height		2,853 mm (9' - 4")
Max. tilt-out height		2,008 mm (79 in)
Max. digging radius		3,092 mm (10' - 2")
Max. reach at ground level		3,046 mm (10')